

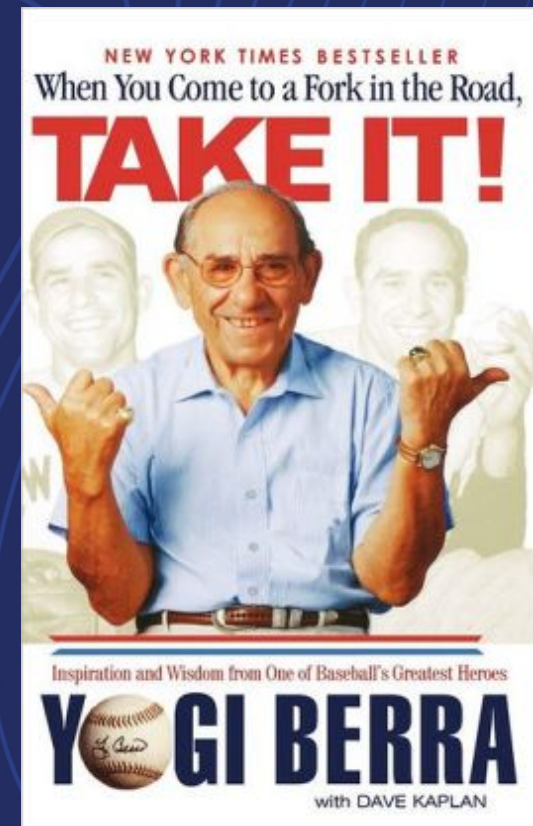
JeffConnect

Care without walls

Judd E. Hollander, MD
Associate Dean for Strategic Health Initiatives
President, Jefferson Acute Care Physicians
Professor, Department of Emergency Medicine

Healthcare in 2015: What We Know

- Patients want care when and where they want it
- Health care is changing
 - Less fee for service
 - More “shared savings” or “risk”
- Choice
 - Try to time the change and hope you can make the turn on a dime
 - OR prepare for the change



Who Knows Patients The Best?

*What
Health Care
Providers
Know About Me . . .*



**Hospitals &
Health Systems**

Not much



My Doctor

Lab values

Medications



Walgreens

I'm compliant with my
statin therapy.

I got a flu shot in October.

I had bronchitis in January.

I use reading glasses.

I have a cat.

I don't use coupons.

Where I live and my likely
commuting pattern

LEVEL OF
INTERACTION

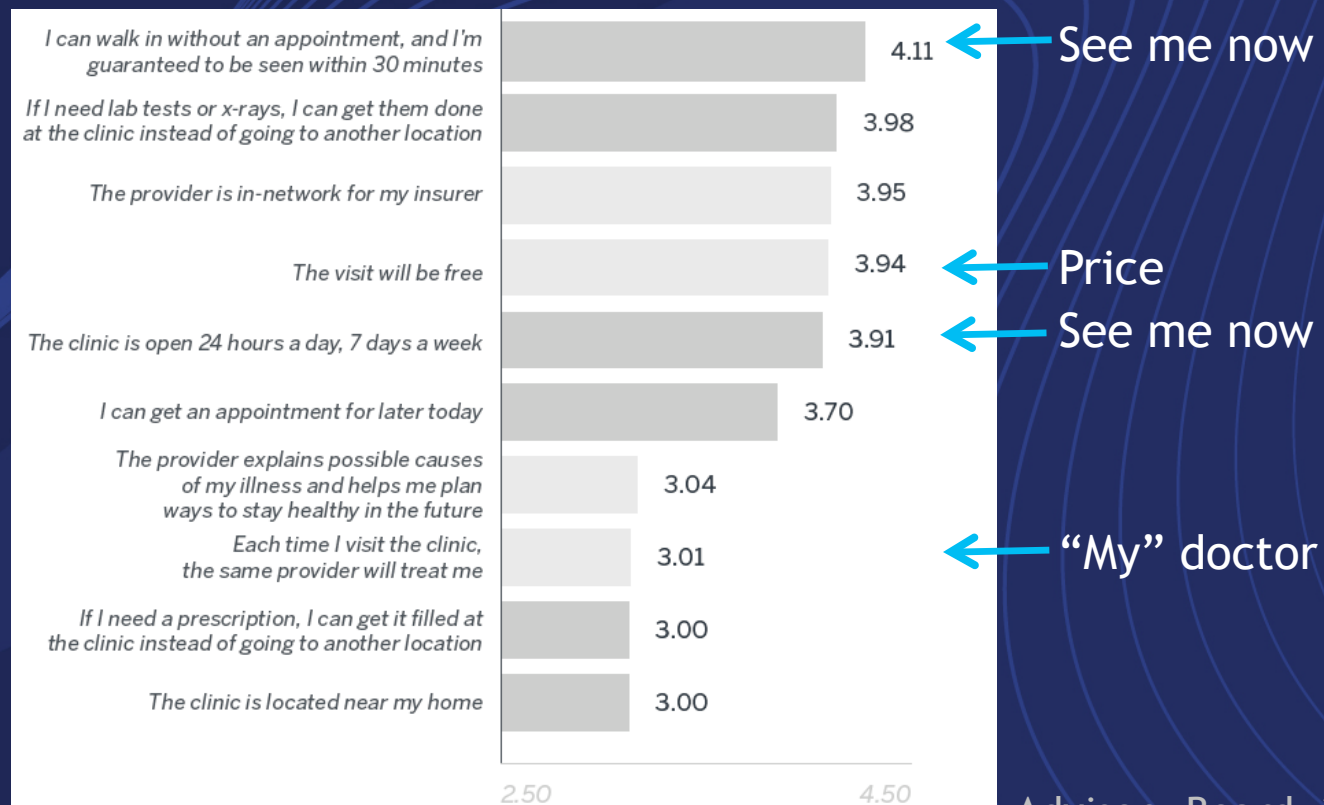
Never

15 minutes/year

A few visits/month; app
downloaded on my iPhone

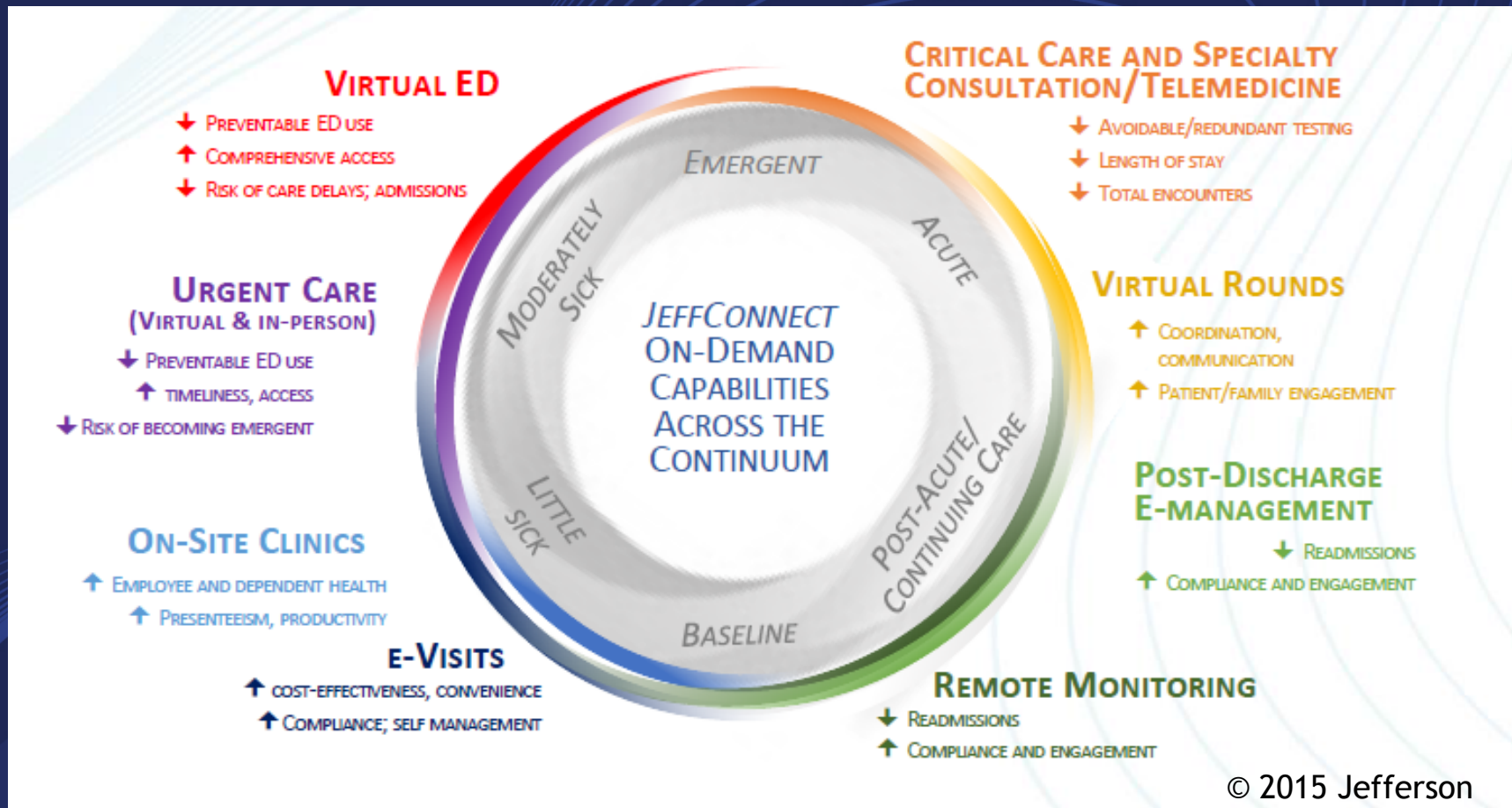
What Patients Really Want

- Top 10 preferred primary care attributes (n=3873)



Advisory Board, 2014 survey

JeffConnect: Highly quality *coordinated* care when & where patients want it



Come Reimagine Healthcare

- Rapid Growth Due to Expansion
- Fellowships
 - Telehealth
- Faculty positions
 - Telehealth
 - Emergency Medicine
 - Urgent Care
 - Observation Medicine
 - Critical Care

If You Can't Get to Your Doctor,
See One of Ours – Online, Anytime, Anywhere



JeffConnect™ is Here

The Faster, Easier Way to See a Doctor – *Virtually!*

- Accessible on smartphone, tablet, laptop or desktop
- Use in your home, hotel room, car or wherever you are in PA, NJ and DE
- Available 7 days a week: 8:30 a.m. to 8:30 p.m. through September 20; 24 hours a day as of September 21

Download the **free JeffConnect™** app today:



Jefferson.edu/JeffConnect

HOME OF SIDNEY KIMMEL MEDICAL COLLEGE